

# SIPS Procedure

## Stomach Intestinal Pylorus Preserving Surgery

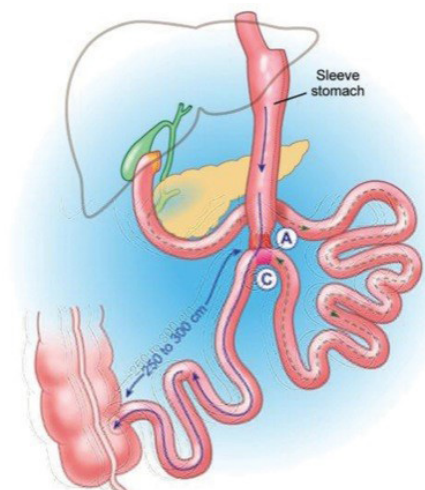


SIPS is a new variation of a well established procedure called Duodenal Switch. SIPS entails two components:

1. Perform a normal Sleeve Gastrectomy
2. Bypass half of the small bowel so that less calories are absorbed

This turns the operation into a more powerful version of sleeve gastrectomy.

For patients who have regained weight after sleeve, converting the sleeve to SIPS is relatively straightforward and should lead to further weight loss. For those looking at a more powerful and potentially more durable up-front procedure than sleeve, SIPS is an alternative that should give the same excellent weight loss as bypass but without some of the worrying possible adverse effects that may occur down the track. This should mean less chance of stomal ulcers, twisted bowel and dumping syndrome.



Because food is bypassing about half of the small bowel, strict attention to vitamin supplements and nutritional monitoring is necessary. Although duodenal switch (a calorie malabsorption procedure) has been around a long time, the SIPS variation is fairly new and has not been studied in as much detail as many other conventional procedures.

*Below is a list of estimated complication rates associated with SIPS surgery. Note that these rates assume a good risk patient without previous weight loss surgery and within a fairly standard weight and BMI range*

Complication	Frequency	Comment
Death	1/500 (0.2%)	
Leak, including duodenal stump	2%	Severe complication
Pulmonary Embolus	1%	Clot in the lungs which may cause respiratory failure or death
Open surgery required	2%	
Bleeding	2%	May require transfusion or sometimes re-operation
Small bowel twist	2%	
Reflux	Occasional	
Diarrhoea	Occasional	
Nutritional Deficiencies	Watch B12, Vit A, Vit D, Calcium, Iron. <i>Strict adherence to supplements required.</i>	
Failure to lose 25% of excess weight		5%
Failure to lose 50% of excess weight		15%

Please sign and date to indicate your understanding of the above:

Sign: \_\_\_\_\_ Print Name: \_\_\_\_\_ Date: \_\_\_\_\_